

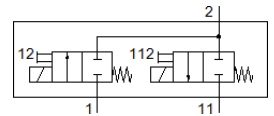
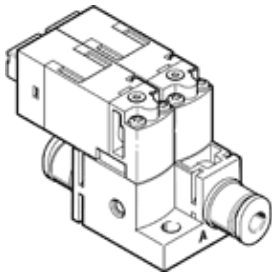
# vacuum valve

## MHA1-2X2/2G-1,5-4-4-3

Part number: 560372

FESTO

to be mounted with a screw on any flat surface.



## Data sheet

Feature	Value
Valve function	2x2/2 closed, monostable
Type of actuation	electrical
Width	20 mm
Standard nominal flow rate	30 l/min
Operating pressure	0 ... 1.5 bar
Type of reset	mechanical spring
Protection class	IP40
CE mark (see declaration of conformity)	to EU directive for EMC
Nominal size	1.5 mm
Grid dimension	20 mm
Exhaust-air function	not throttleable
Sealing principle	soft
Assembly position	Any
Manual override	Pushing
Type of piloting	direct
Flow direction	non reversible
Signal status display	LED
Operating pressure, reversible	-0.95 ... 0 bar
Suitability for vacuum	Yes
Standard flow rate pmax -> 0	30 l/min
Maximum switching frequency	10 Hz
Switching time off	6 ms
Switching time on	6 ms
Duty cycle	100 %
Characteristic coil data	24 V DC: low-current phase 0.7 W, high-current phase 3 W
Permissible voltage fluctuation	+/- 10 %
Operating medium	Compressed air in accordance with ISO8573-1:2010 [7:4:4]
Note on operating and pilot medium	Lubricated operation possible (subsequently required for further operation)
Vibration resistance	Transport application test at severity level 2 in accordance with FN 942017-4 and EN 60068-2-6
Shock resistance	Shock test with severity level 2 in accordance with FN 942017-5 and EN 60068-2-27
Corrosion resistance classification CRC	2 - Moderate corrosion stress
Storage temperature	-20 ... 60 °C
Medium temperature	-5 ... 50 °C
Ambient temperature	-5 ... 50 °C
Product weight	30.6 g
Max. line length	30 m
Electrical connection	Plug KMH
Mounting type	with through hole
Pneumatic connection, port 1	QS-4
Pneumatic connection, 11	QS-4
Pneumatic connection, port 2	QS-3

<b>Feature</b>	<b>Value</b>
Materials note	Free of copper and PTFE Conforms to RoHS
Material seals	FPM HNBR NBR
Material housing	PA-reinforced PPS-reinforced
Material screws	Steel